

# Lowell Area Schools Return to Learn and Continuity of Services Plan 2022-2024

The districts of Kent County will continue to prioritize full, in-person teaching and learning which provides the greatest benefit to students. Ensuring that this can happen both consistently and safely during the school year, the 2024-25 Return to Learn Plan provides detailed guidance to ensure that COVID-19 prevention and mitigation measures are implemented in a way that fosters optimal learning environments while simultaneously ensuring the health and safety for students and staff in Kent County. This plan was collaboratively developed by all Kent County Superintendents with support from the Kent County Health Department to ensure that all Kent County school districts have aligned and detailed a plan for a successful and safe return to school and learning environment.

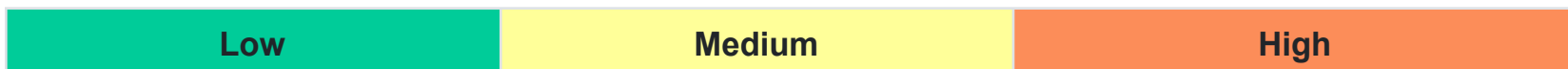
*Please Note: This plan may change and evolve as knowledge changes surrounding current and potential variants or if the risks of severe disease, hospitalizations, or death increase. The plan may also need to vary based on in-school COVID-19 activity and outbreaks. If such changes are necessary, transition time may be needed to allow the district or building to make adjustments to mitigation strategies. Periodically, but not more than every six months during the life of the grant, the plan will be reviewed and updates will be completed, if deemed necessary.*

Supporting Documents: [MDE and MDHHS “Managing Communicable Diseases in Schools”](#)  
[MDHHS Readiness, Response, Recovery Cycle](#) [CDC Community Levels](#) [Mi Safe Start Map](#)

The CDC will determine the COVID-19 community level for the county. Based on the community COVID-19 level, as determined by the CDC, Lowell Area Schools, in consultation with MDHSS and KCHD as necessary, will determine the number of mitigation strategies to implement to foster optimal learning environments while simultaneously ensuring the health and safety of students and staff.

***The district will comply with any and all local, state, and federal mandates/orders.***

The following plan outlines measures for the CDC COVID-19 Community Levels of low, medium, and high.  
The levels do not apply in situations of COVID-19 outbreaks in schools, classrooms, or athletics.



**Recommended Prevention/Mitigation Strategies:**

Low	Medium	High
<b>Instructional Format</b>		
In-person instruction will occur.	In-person instruction will occur.	In-person instruction will occur, but some classes, grades, or buildings may be moved temporarily to remote instruction if recommended by the health department due to outbreaks and to control in-school spread.
<b>Athletics</b>		
Athletic practices and competitions will be permitted. MHSAA guidelines will be followed.	Athletic practices and competitions will be permitted and additional health and safety protocols as deemed appropriate may be put into place. MHSAA guidelines will be followed.	Athletic practices and competitions may be paused; if practices continue, they may focus on skills building with increased social distancing encouraged. MHSAA guidelines will be followed.
<i>Athletic testing <b>will not be required</b> unless mandated by the MHSAA or a local or state agency and/or a sanctioning body.</i>		
<b>Cleaning and Disinfecting</b>		
The district will follow regular cleaning and disinfection procedures.	The district will follow regular cleaning and disinfection procedures. Additional disinfecting procedures may be implemented in classrooms during the day as recommended: <a href="https://www.cdc.gov/coronavirus/2019-ncov/community/disinfecting-building-facility.html">https://www.cdc.gov/coronavirus/2019-ncov/community/disinfecting-building-facility.html</a>	The district will follow regular cleaning and disinfection procedures. Additional cleaning and disinfecting procedures may be implemented in classrooms during the day as recommended: <a href="https://www.cdc.gov/coronavirus/2019-ncov/community/disinfecting-building-facility.html">https://www.cdc.gov/coronavirus/2019-ncov/community/disinfecting-building-facility.html</a>

<b>Cohorting</b>			
Mixing of students will not be restricted.	Mixing of students may be restricted in some areas, activities, classrooms, and/or buildings.	Mixing of students may be restricted in some areas, activities, classrooms, and/or buildings.	
<b>COVID-19 Testing</b>			
Testing will not be required but may be used as a Test to Stay (TTS) option under medium and high levels of transmission.			
<b>Extracurricular and Field Trips</b>			
Extracurricular activities may occur as scheduled.	Short-term dismissals and suspension of extracurricular activities and field trips may be paused.	Short-term dismissals and suspension of extracurricular activities and field trips may be paused.	
<b>Face Coverings (Masks)</b>			
Staff, students, volunteers, and visitors are recommended to wear face masks if unvaccinated and/or immunocompromised.	Staff, students, volunteers, and visitors are recommended to wear face masks in all areas and for all activities, especially if immunocompromised.	Staff, students, volunteers, and visitors are strongly recommended to wear face masks in all areas and for all activities. Districts will follow all public health orders issued by the KCHD, MDHHS, and/or CDC.	
<b>Food Service</b>			
Normal foodservice operations will occur.	Normal food service operations will occur. Additional health and safety protocols will be put in place as indicated.	Normal food service operations will occur. Additional health and safety protocols will be put in place as indicated.	
	<b>Gathering and Facility Use</b>		
No restrictions on gatherings or use of facilities.	Restrictions on gathering size and/or use of facilities may be implemented. Outside agency use of facilities may be restricted.	Restrictions on gathering size and/or use of facilities may be implemented. Outside agency use of facilities may be restricted.	

### Hand Hygiene and Respiratory Etiquette

Hand Hygiene/Hand Sanitation and Respiratory Etiquette are expected.

Hand Hygiene/Hand Sanitation and Respiratory Etiquette are expected and additional opportunities for proper hand washing will be available throughout the day. Hand sanitizing may be required when students leave or enter the classroom and other designated areas.

Hand Hygiene/Hand Sanitation and Respiratory Etiquette are expected and additional opportunities for proper hand washing will be available throughout the day. Hand sanitizing will be required when students leave or enter the classroom and other designated areas.

### Isolation and Quarantine

The District will follow current guidance and recombinations of MMDHS, MDHHS, and CDC pursuant to the district's authority under MCL 380.11a(3) and Rule 325.175(2).

### Meetings and Conferences

In-district/out-of-district meetings and conferences will be permitted.

In-district/out-of-district meetings and conferences may be limited, virtual, or may be suspended.

In-district/out-of-district meetings and conferences may be limited, virtual, or may be suspended.

### Offices

District and building offices will be open for normal school business. Visitors and guests are allowed in buildings per district policy.

District and building offices will be open for normal school business. Prioritize visits to minimize office visitor traffic. Additional health and safety protocols may be put in place as deemed appropriate. Visitors and guests may be limited.

District and building offices will be open for normal school business. Prioritize visits to minimize office visitor traffic. Additional health and safety protocols may be put in place as deemed appropriate. Visitors and guests may be limited.

### Remote/Virtual Learning

The district does not have a virtual option. The district will do its best to provide resources for students who are unable to attend in person due to isolation or quarantine. If a classroom or school is closed, all students impacted by the closure may be provided remote learning opportunities throughout the closure.

## Social Distancing

Feasible social distancing measures will be put in place.

Additional Social Distancing measures may be provided as able. Adjustments to school procedures, schedules, activities, etc., may be made to adjust to the social distancing requirements.

Additional Social Distancing measures may be provided as able. Adjustments to school procedures, schedules, activities, etc., may be made to adjust to the social distancing requirements.

## Health Screening

Parents/guardians should conduct a daily student wellness check prior to sending students to school.

***DO NOT SEND STUDENTS TO SCHOOL IF THEY ARE SICK.***

See the student illness section.

## Student Illness

Parents/Guardians are not to send children to school who are ill per PO 8450 - Control of Casual Contact Communicable Diseases. Students exhibiting the following symptoms that are new or different/worse from their baseline of any chronic illness shall remain home or excluded from school or excluded from school until the student is symptom-free for 24 hours without the aid of medication or as indicated for their illness. (see [https://www.michigan.gov/documents/mdch/Managing\\_CD\\_in\\_Schools\\_FINAL\\_469824\\_7.PDF](https://www.michigan.gov/documents/mdch/Managing_CD_in_Schools_FINAL_469824_7.PDF))

- Severely ill (lethargic or less responsive, has difficulty breathing)
- Fever (temp over 100.4) or feeling feverish/chills
- Cough, shortness of breath
- Sore throat
- Runny or stuffy nose (congestion)
- Muscle or body aches
- Headaches
- Fatigue (tiredness)
- Vomiting(two or more times)
- Diarrhea (two or more loose or watery stools)
- Abdominal pain
- Rash with fever
- Wearing skin sores that cannot be covered
- New loss of taste or smell

### Transportation

Normal transportation operations will occur.

Normal transportation operations will occur. Additional health and safety protocols may be put in place as deemed appropriate. Additional cleaning and disinfecting procedures will be implemented.

Normal transportation operations will occur. Additional health and safety protocols may be put in place as deemed appropriate. Additional cleaning and disinfecting procedures will be implemented.

### Vaccinations

The district is not requiring staff or students to be vaccinated. KCHD, MDHHS, and CDC recommend COVID-19 vaccination as the leading public health prevention strategy to end the COVID-19 pandemic as well as keep schools, extracurricular activities, and sports safely operational and in person

## Who is Impacted

## Public Health Recommendations

### COVID-19 Infection

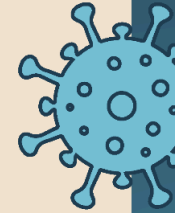
Any individual who tests positive for COVID-19 and/or displays COVID-19 symptoms (without an alternate diagnosis or negative COVID-19 test) regardless of vaccination status.



Isolate at home for 5 days (day “0” is day symptoms begin or day test was taken for those without symptoms); and



If symptoms have improved or no symptoms developed, may leave isolation after day 5 and wear a well-fitting mask, for 5 more days (ending after day 10).\*



### COVID-19 Exposure

Close contact exposed to someone with COVID-19, regardless of vaccination status.



Monitor symptoms for 10 days.



Wear a well-fitting mask around others for 10 days after exposure.



Test 5 days after exposure and if symptoms develop.



Avoid unmasked activities or activities with higher risk of exposing vulnerable individuals.\*\*

\* You may remove your mask sooner than day 10 with two sequential negative antigen tests 48 hours apart. If a mask cannot be worn, 10 days of home isolation is recommended.

\*\* Activities with immunocompromised or other high-risk individuals, social/recreational activities in congregate settings or when community levels are high.